

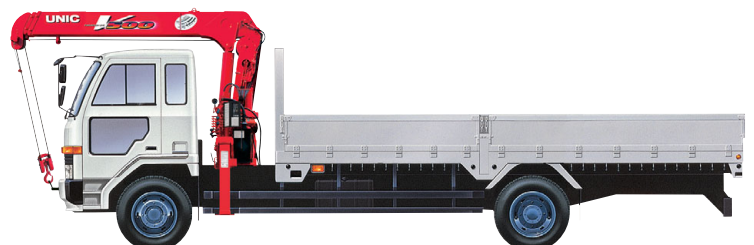
UNIC



Truck-Mounted UNIC Crane
UR-V500 Series
For Heavy-Duty truck

V500

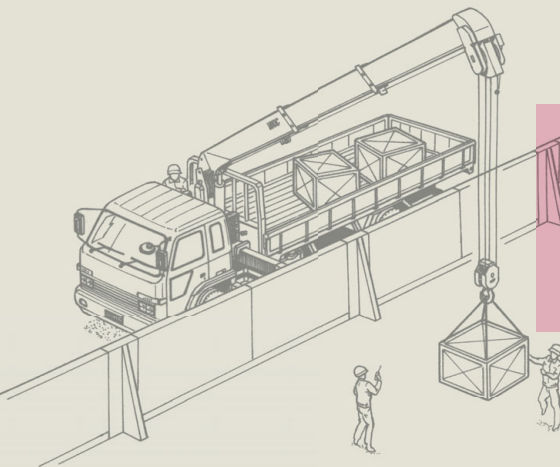
Maximum Lifting Capacity. **3030** kg.




FURUKAWA UNIC CORPORATION

UNIC Crane, High safety and reliability.


V500
Model Line-up



Maximum Hook Height.
17.3m.
(6 section boom)



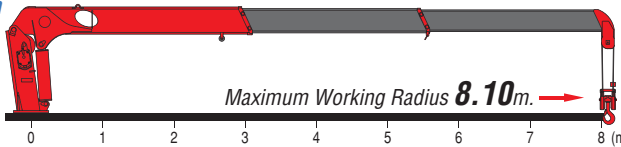
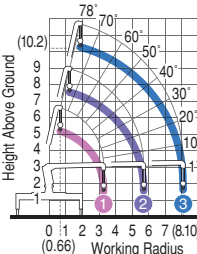
Maximum Lifting Capacity.
3030kg.



Wide Horizontal Extension, Max. **3800**mm.
UNIC offers also Extra Wide Horizontal Extension Outrigger Version - **UR-V500W** series. Maximum **4800**mm.
Wide Horizontal Extension. It provides additional stability for safe operation.

V503 3 Section Boom

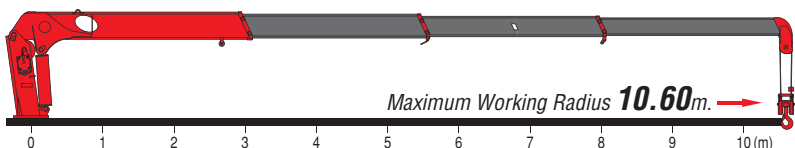
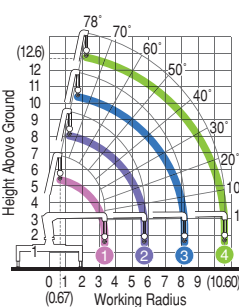
Working Range (m)



Rated Loads (kg)	0.66~2.8	3.5	4.1	4.5	5.0	5.5	6.0	6.5	7.0	7.5	8.1
1	3030	3030 (3.27m)									
2	3030	3030	3030	2580	2280	2000	1880 (5.70m)				
3	3030	3030	3030	2580	2280	2000	1730	1580	1430	1330	1230

V504 4 Section Boom

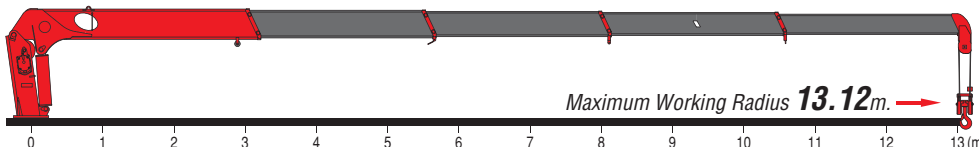
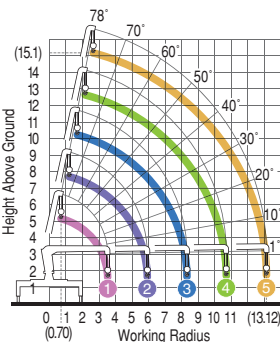
Working Range (m)



Rated Loads (kg)	0.67~2.7	3.5	4.1	4.5	5.0	5.5	6.0	6.5	7.0	7.5	8.0	9.0	10.6
1	3030	3030 (3.33m)											
2	3030	3030	3030	2580	2280	1930	1780 (5.76m)						
3	3030	3030	3030	2580	2280	1930	1730	1530	1400	1280	1130 (8.18m)		
4		2030	2030	2030	1830	1650	1480	1330	1230	1150	1080	980	830

V505 5 Section Boom

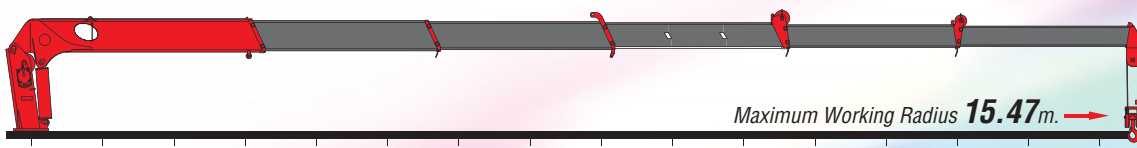
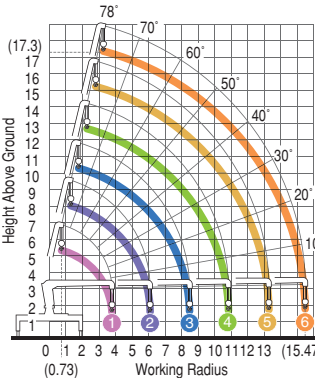
Working Range (m)



Rated Loads (kg)	0.70~2.7	3.0	3.9	4.5	5.0	5.5	6.0	7.0	8.0	9.0	10.0	11.0	12.0	13.12
1	3030	3030	3030 (3.51m)											
2	3030	3030	3030	2430	2130	1880	1680 (5.91m)							
3	3030	3030	3030	2430	2130	1880	1650	1330	1080 (8.31m)					
4			2030	2030	1830	1650	1480	1230	1030	880	780	730 (10.71m)		
5				1330	1330	1200	1100	950	830	730	650	600	550	500

V506 6 Section Boom

Working Range (m)



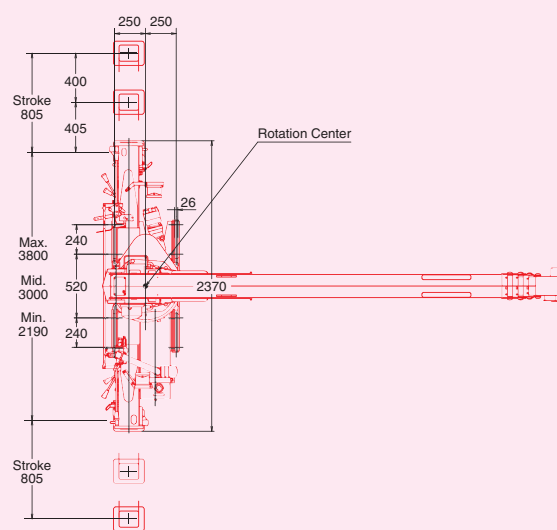
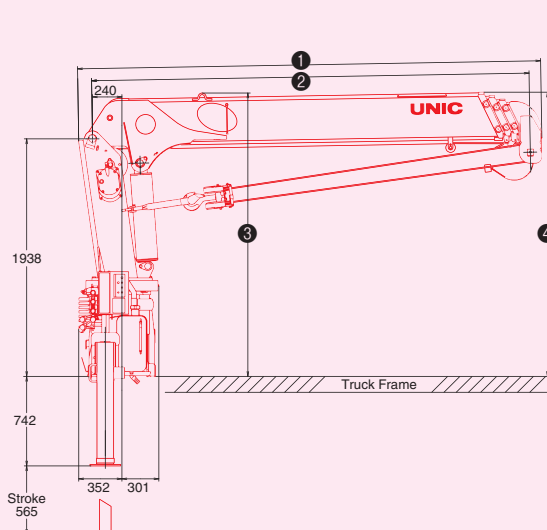
Rated Loads (kg)	0.73~2.7	3.0	3.9	4.5	5.0	5.5	6.0	7.0	8.0	9.0	10.0	11.0	12.0	13.0	14.0	15.47
1	3030	3030	3030 (3.69m)													
2	3030	3030	3030	2430	2130	1880	1600 (6.09m)									
3	3030	3030	3030	2430	2130	1880	1630	1330	1030 (8.48m)							
4			2030	2030	1830	1650	1480	1230	1030	880	780	730 (10.81m)				
5				1330	1330	1200	1100	950	830	730	650	600	550	500 (13.14m)		
6							530	430	380	380	330	330	280	280	250	230

Specifications Table

Crane Model	UR-V503	UR-V504	UR-V505	UR-V506
Maximum Lifting Capacity	3030kg at 4.1m	3030kg at 4.1m	3030kg at 3.9m	3030kg at 3.9m
Maximum Hook Height	Max. 10.2m	Max. 12.7m	Max. 15.1m	Max. 17.3m
Maximum Working Radius	Min. 0.66m to Max. 8.10m	Min. 0.67m to Max. 10.60m	Min. 0.70m to Max. 13.12m	Min. 0.73m to Max. 15.47m
Boom Length	Min. 3.51m to Max. 8.34m	Min. 3.57m to Max. 10.84m	Min. 3.75m to Max. 13.35m	Min. 3.93m to Max. 15.71m
Boom Sections	3	4	5	6
Boom Raising Angle	Min. 1° to Max. 78°	Min. 1° to Max. 78°	Min. 1° to Max. 78°	Min. 1° to Max. 78°
Slewing Angle (Continuous)	360°	360°	360°	360°

Crane Mounting Dimensions

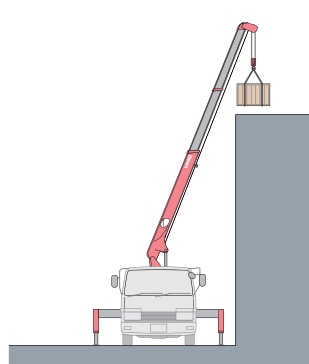
Crane Model	①	②	③	④
UR-V503	3720	Min. 3510 ~ Mid. 5940 ~ Max. 8340	2312	2319
UR-V504	3779	Min. 3570 ~ Mid. 6000 ~ 8420 ~ Max. 10840	2312	2319
UR-V505	3959	Min. 3750 ~ Mid. 6150 ~ 8550 ~ 10950 ~ Max. 13350	2359	2363
UR-V506	4139	Min. 3930 ~ Mid. 6330 ~ 8720 ~ 11050 ~ 13380 ~ Max. 15710	2398	2535



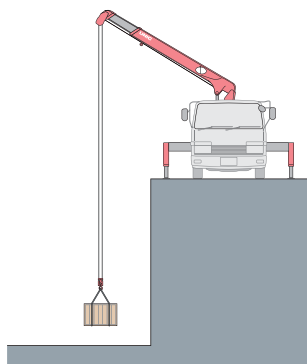
Drawing: UR-V504 (Unit: mm)

UNIC Crane: High, low or tight, they're safe, sure, dependable.

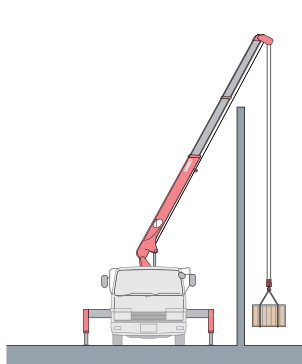
High or low tight, UNIC straight-boom wire-rope cranes match the task. They're great high-lift performers, Lifting loads over walls is also no problem with their unrestricted raising and lowering. In deep-hole jobs they're strong, and accurate. Many extra safety features, too.



Buildings, walls, whatever, with UNIC wire-rope cranes you get precise high-lift placement and safe, sure operation. Their dependability is all in their strength and design, original UNIC features.



Higher performance, too, at lower depths. UNIC wire-rope cranes handle heavy loads in deep-hole jobs with accuracy and stability. A wide range of models assures versatile matching to job requirements.



Tight places are the right places for UNIC wire-rope cranes. In any operating situation their strong steel cables mean extra dependability and safety. High, low, or tight, UNIC wire-rope cranes are always right.



NOTE



HOOK
+
SLINGS
+
LOAD
=
RATED LOAD

- Rated loads shown in the chart are based on the crane strength with the outriggers fully extended on a firm level ground and on the actual working radius including the deflection of boom.
- The weights of hook (30 kg.), slings, and any accessories attached to the boom or loadline must be deducted from the above capacities in the chart.
- Capacities shown must reduce in accordance with vehicle weight and loaded condition of truck, crane mounting position, and operating speed.
- The figures in relation to the speed are on the basis of no-load running at rated oil flow conditions.
- In accordance with our policy of constant product improvement, all specifications are subject to change without notice or obligations.

FURUKAWA UNIC CORPORATION

5-3, Nihonbashi 1-chome, Chuo-ku, TOKYO 103-0027 JAPAN
Phone: (81-3) 3231-8613 / Facsimile: (81-3) 3231-8261
<http://www.uniccrane-global.com/>

Authorized **UNIC** distributor